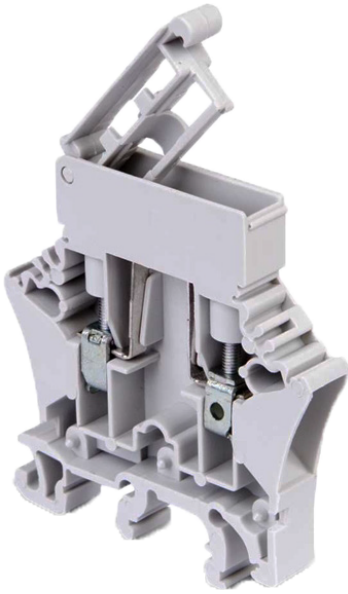


# Emphatec DePro® - BC5F C1D2

## Fuse Holder



### Features

- 5x20 mm fuse holder
- Class 1 Division 2 certified
- Plug and socket connections
- Universal mounting foot

Weidmuller has partnered with Unibloc to offer terminal blocks. It is intended as an accessory to Weidmuller's DC power supplies but is also suited for general purpose use as well as Class 1 Division 2 applications. The BC5F is a 5x20mm fuse holder\* and is 8mm wide. The terminal accepts Weidmuller's Dekafix and Multicard marking tags. Accessories such as partitions and jumper combs are available.

The combifoot design allows a single terminal to be used on any of the commonly available DIN rails – 15mm, 32mm, 35x7.5mm and 35x15mm. For Class 1 Division 2 applications the terminal has been tested for temperature rise and pullout. The pullout tests are not only for the wire terminations but are also performed on the fuse lever. The lever must withstand a force of 15N to ensure it cannot be accidentally operated while under load and cause an arc. Generally only screw-in style fuse terminals would meet this requirement but the BC5F passes easily.

\*For an explanation of the differences between a "fuse terminal" and a "fuse holder" see the Application Note.

### Ordering Data

Type	Order Number
Emphatec DePro® - BC5F C1D2 Fuse Holder	330017

## Technical Data

Emphatec DePro® - BC5F C1D2: Fuse Holder				
<b>Order Number</b>	<b>330017</b>			
<b>Dimensions</b>	Width mm:	8	Length mm:	54
	Height on 32mm rail mm:	62.7	Height on 35x7.5mm rail mm:	57.8
	Height on 35x15mm rail mm:	65.3	Height on 15mm rail mm:	56.5
<b>Terminations</b>	Wire size AWG / mm <sup>2</sup> :	20-8 / 0.5-10		
	Stripping length mm:	6		
	Tightening torque Nm / in-lb:	0.4 / 3.5		
<b>Ratings</b>	Voltage V:	300		
	Current A:	10		
	Approval:	CSA C22.2 No. 39-M1987 - Fuseholder Assemblies CSA C22.2 No. 158-1987 - Terminal Blocks CSA C22.2 No. 213-M1987 - Non-Incendive Electrical Equipment for Class 1 Division 2 Hazardous Locations		
<b>Materials</b>	Housing:	Ultramid or Latamid		
	Flammability:	UL94 - V0 (grey versions)		
	Screws / clamps:	Steel, chromate plated		
	Current bar:	Tin plated copper		
	Disconnect:	N/A		
	Disconnect / fuse clips:	Tin plated brass		
<b>Accessories (standard package quantity)</b>	Endplate, 1.6mm with grey:	330019 (20)		
	Insulated jumper comb:	2 pole: 330024 (10) 3 pole: 330025 (10) 5 pole: 330026 (10) 10 pole: 330027 (1)		
	End Bracket - 32mm rail:	Consult Factory		
	End Bracket - 35mm rail:	330089 (20)		
	Marking Tags:	Consult Factory		

### Weidmuller Ltd.

10 Spy Court  
Markham, ON  
Canada  
L3R 5H6  
Toll Free: (800)268-4080

[www.klippon-engineering.com/emphatec](http://www.klippon-engineering.com/emphatec)

Subject to technical changes

06/21 CA KE | LIT 1054